



# HOSHIZAKI



HACCP



## FREEZER

# FT-126MC-S

### Key Features



**Self-Evaporating  
Design**



**LED Interior  
Lighting**



**R290  
Natural Refrigerant**



**Door Switch**

Our A-Fit cabinet combines functionality and outstanding energy performance to meet Japanese quality standards, with precise temperature control to ensure food-ingredient freshness at all times. With the R290 natural refrigerant and a door switch preventing the evaporator fan from running while the refrigerator is open, they not only perform efficiently but also support a greener tomorrow.

This model is compliant with NEA's  
**Mandatory Energy Labelling Scheme (MELS) at 3 Tick.**

ENERGY EFFICIENCY RATING

**Good**



Annual Energy Cost | Annual Energy Consumption

**\$506**

**1872 kWh**

Hoshizaki

Commercial Storage Refrigerator

FT-126MC-S

Capacity: 156.2 L

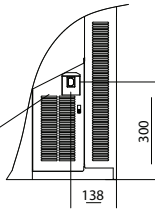
Tested in accordance with ISO 22041.  
Actual annual energy consumption and cost may vary.  
Scan QR code for more information  
ELS-HSG-CSR250024



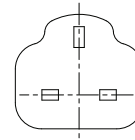


# HOSHIZAKI

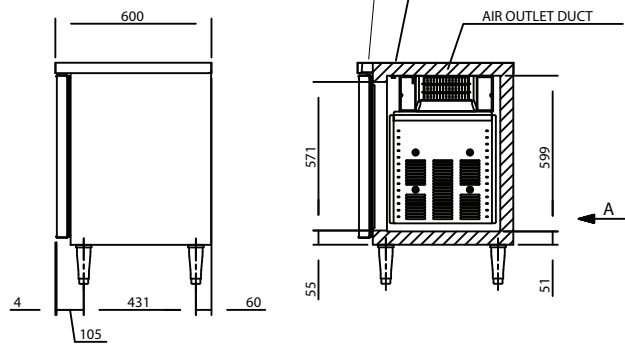
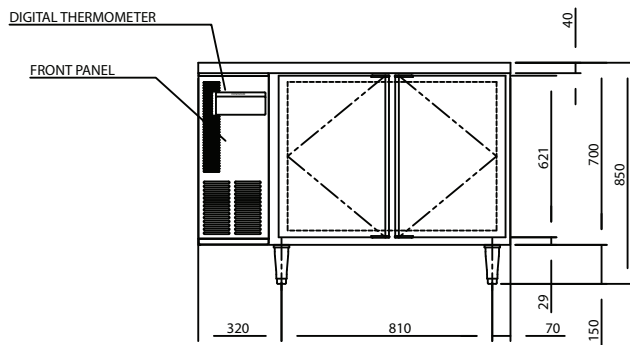
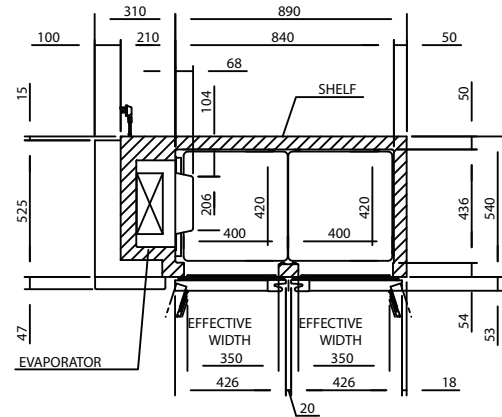
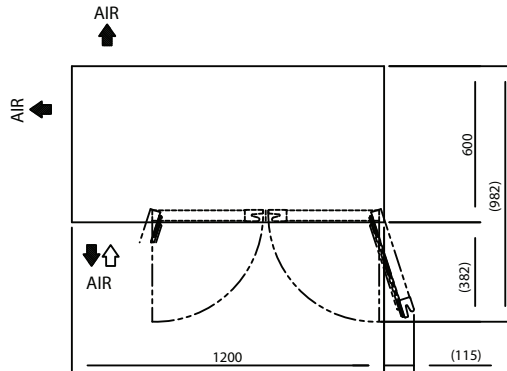
POWER CORD 2000 LONG OUTSIDE  
(UK PLUG WITH EARTH WIRE)



VIEW A(1/10)



UK PLUG



MODEL	FT-126MC-S
POWER SUPPLY	1 Phase 220V~240V 50Hz / Capacity: 0.63kVA (2.90A)
ELECTRIC CONSUMPTION	Motor: 194W / Heater: 230W / Refrigeration: 234W / Defrost: 190W
TEMPERATURE CONTROL	Microprocessor (Digital Temp. Indication) Adjustable from -25 to -7°C
EFFECTIVE CAPACITY	Total 199L
WEIGHT	Net: 69kg / Gross 81kg
OUTSIDE DIMENSIONS	1200mm(W)× 600mm(D)×850(-880)mm(H)
PACKAGE	Carton (Wooden Pallet) 1265mm(W)×680mm(D)×790mm(H)
AMPERAGE	Rated 1.5A
SHELF	4 pcs
OPERATING CONDITIONS	Ambient Temperature: 5 - 38°C, Voltage Range: Rated Voltage ±6%

## HOSHIZAKI SINGAPORE PTE LTD

18 Boon Lay Way #01-102 , Tradehub 21 S609966

Tel: +65 6225 2612 Website: [www.hoshizaki.com.sg](http://www.hoshizaki.com.sg)